

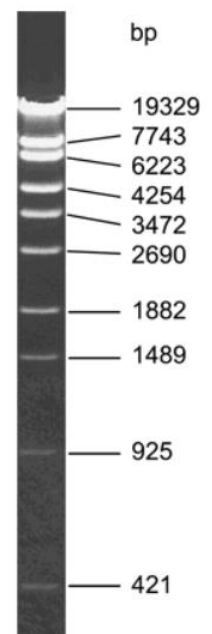
Technical Data Sheet

DNA Ladder Phage Lamda - Sty I

for molecular biology

Order number: 1305

Lambda DNA (cI857 Sam 7) is digested with Sty I, followed by inactivation of the enzyme. The Sty I digest results in 11 DNA fragments of the following sizes: 19.329 bp, 7743 bp, 6223 bp, 4254 bp, 3472 bp, 2690 bp, 1882 bp, 1489 bp, 925 bp, 421 bp, and 74 bp (not always visible). The DNA fragments are ethanol-precipitated and resuspended in storage buffer (a gel loading buffer has to be added by the user) containing 10 mM Tris-HCl (pH 8.0) and 1 mM EDTA. The final DNA concentration is 0.2-0.5 µg/µl. The figure on the right shows the result of agarose gel electrophoresis (1.7% Agarose) of 1 µg DNA Ladder Phage Lamda - Sty I after staining with Ethidium bromide.



Application

The recommended amount of DNA Ladder Phage Lamda - Sty I to load on an Agarose gel is 1µg / lane. Use in combination with an appropriate loading buffer.

Caution: The cohesive ends of fragments 1 and 4 may cause formation of extra band of 23.583 bp. The fragments can be separated by heating the DNA Ladder to 65°C for 3 minutes before loading on the gel.

Storage: Store at -20°C. Avoid repeated freeze & thawing by preparing small aliquots.

Related products

- 1254 Ethidium bromide - Solution 0.07 % dropping bottle for electrophoresis
- 1531 DNA Ladder 1 kb (lyophilized) for molecular biology
- 1110 Agarose Basic for molecular biology
- 1133 dsDNA-Stain nontoX for molecular biology
- 1018 SYBR Green® staining reagent, DNA free for biochemistry
- 1303 TBE buffer (10X) for electrophoresis
- 1255 TAE buffer (50X) for electrophoresis
- 1159 Water PCR tested, DNA free for molecular biology

JB05122018

